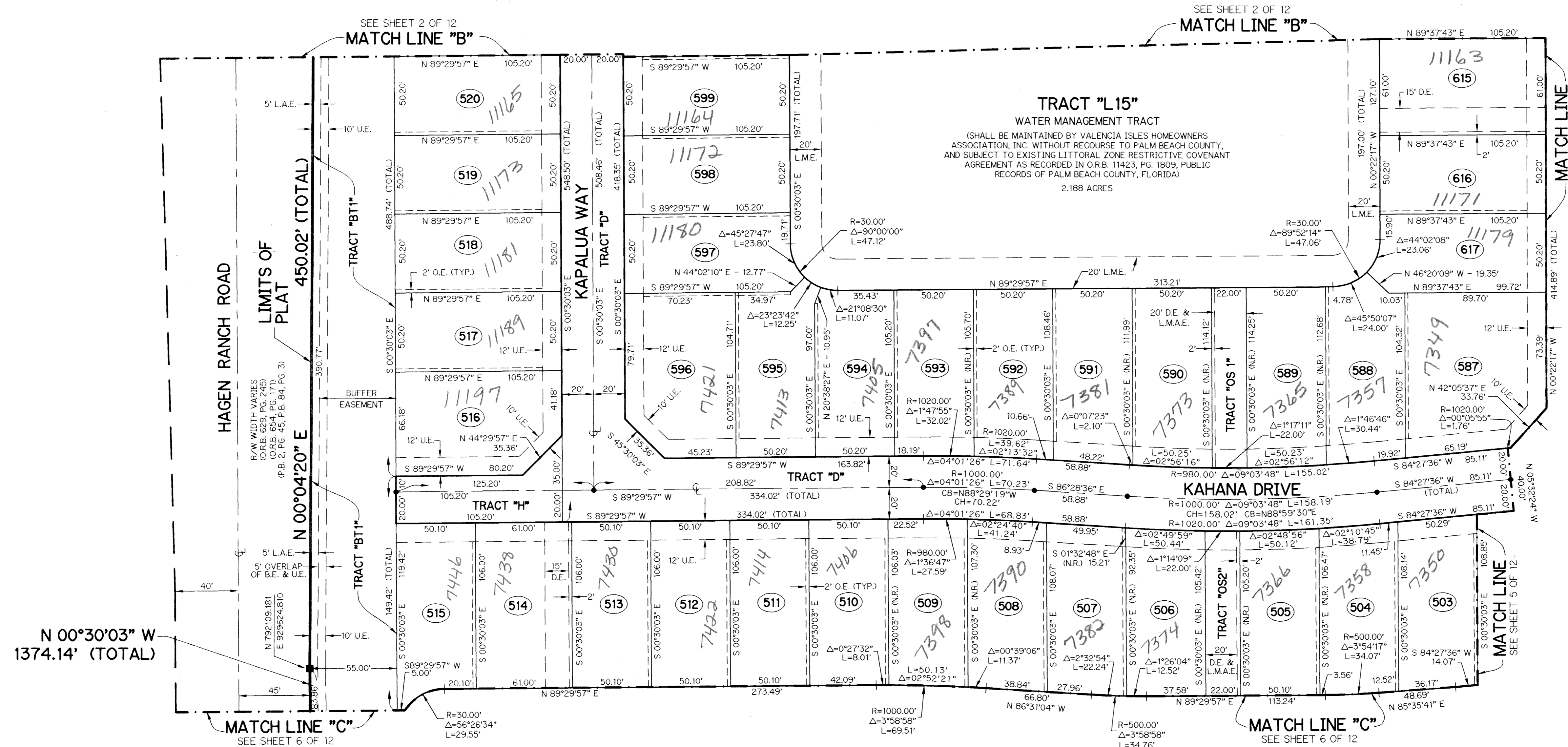
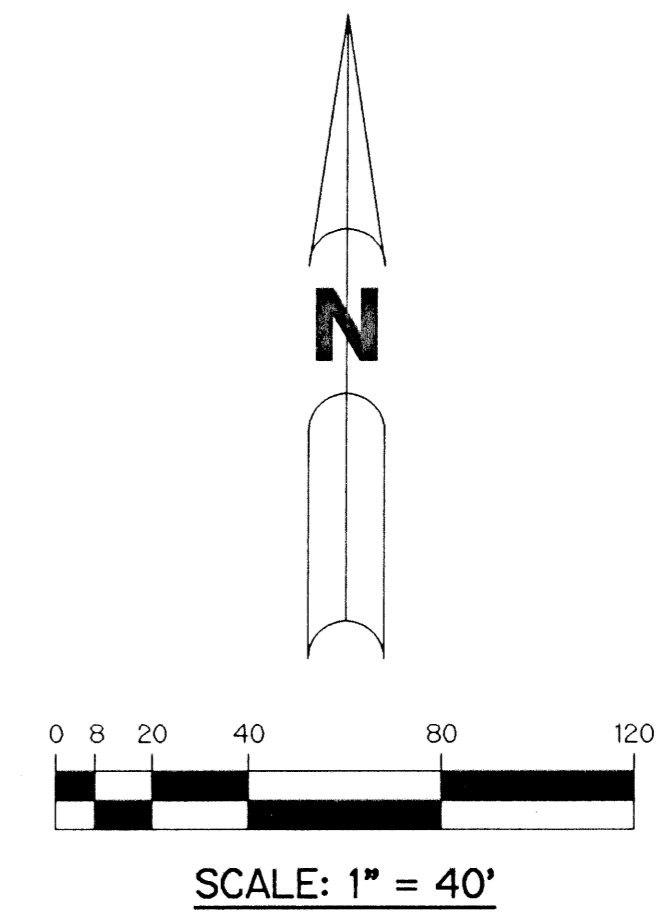


MILIN FARMS PLANNED UNIT DEVELOPMENT

VALENCIA ISLES - PLAT THREE

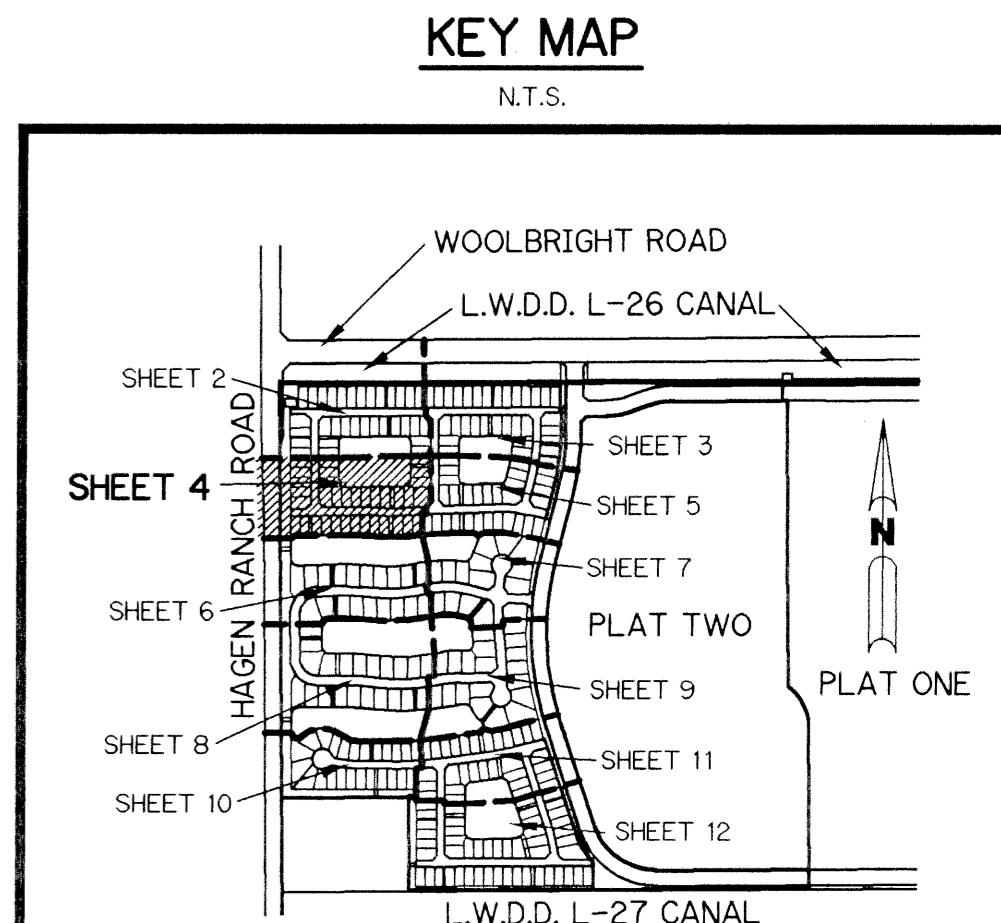
BEING A REPLAT OF A PORTION OF TRACT "Q" ACCORDING TO THE PLAT OF VALENCIA ISLES - PLAT ONE, AS RECORDED IN PLAT BOOK 84, PAGES 3 THROUGH 17, INCLUSIVE, AND ALL OF TRACT "BT10" ACCORDING TO THE PLAT OF VALENCIA ISLES- PLAT TWO, AS RECORDED IN PLAT BOOK 84, PAGES 99 THROUGH 106, INCLUSIVE, ALL OF THE PUBLIC RECORDS OF PALM BEACH COUNTY, FLORIDA. LYING IN SECTION 33, TOWNSHIP 45 SOUTH, RANGE 42 EAST.

SHEET 4 OF 12 AUGUST, 1999



- LEGEND:**
- - SET PERMANENT REFERENCE MONUMENT, PSM #4213
 - - PERMANENT CONTROL POINT, PSM #4213
 - Δ - DELTA ANGLE
 - B.E. - BUFFER EASEMENT
 - CB - CHORD BEARING
 - CH - CHORD DISTANCE
 - C.L. - CENTERLINE
 - D.B. - DEED BOOK
 - D.E. - DRAINAGE EASEMENT
 - L - ARC LENGTH
 - L.A.E. - LIMITED ACCESS EASEMENT
 - L.M.A.E. - LAKE MAINTENANCE ACCESS EASEMENT
 - L.M.E. - LAKE MAINTENANCE EASEMENT
 - L.W.D. - LAKE WORTH DRAINAGE DISTRICT
 - NR. - NOT RADIAL
 - N.T.S. - NOT TO SCALE
 - O.E. - OVERHANG EASEMENT
 - O.R.B. - OFFICIAL RECORD BOOK
 - P.B. - PLAT BOOK
 - P.S. - PAGES
 - P.S.M. - PROFESSIONAL SURVEYOR AND MAPPER
 - R - RADIUS
 - RAD. - RADIAL
 - R/W - RIGHT-OF-WAY
 - S.D.E. - SWALE DRAINAGE EASEMENT
 - S.T. - SURVEY TIE
 - U.E. - UTILITY EASEMENT
 - V.I.-1 - VALENCIA ISLES - PLAT ONE
 - PER P.B. 84, PGS. 3-17
 - CB - CHORD BEARING
 - CH - CHORD
- N 737648.0171
E 905258.2326

Valencia Isles
PAGE 610
FLOOD MAP #JCCA
ZONING PUD
QUAD # 50
SE 47-74
TAZ 452
PUD NAME Milin Farms



NOTE:
COORDINATES SHOWN ARE GRID COORDINATES
DATUM = NAD 83 (1990 ADJUSTMENT)
ZONE = FLORIDA EAST ZONE
LINEAR UNIT = U.S. SURVEY FEET
COORDINATE SYSTEM = 1983 STATE PLANE TRANSVERSE MERCATOR PROJECTION
ALL DISTANCES ARE GROUND
SCALE FACTOR = 1.0000285
N 89°37'43" E (PLAT BEARING)
N 89°37'43" E (GRID BEARING) (PLAT = GRID)

THIS INSTRUMENT PREPARED BY
PERRY C. WHITE, P.S.M. 4213, STATE OF FLORIDA
LAWSON, NOBLE AND WEBB, INC.
ENGINEERS PLANNERS SURVEYORS
420 COLUMBIA DRIVE
WEST PALM BEACH, FLORIDA 33409
LB-6674